

MAKE YOUR TEAM STRONGER

LORCH COBOT WELDING



LORCH
smart welding

THE TIME HAS COME FOR A NEW TYPE OF WELDING

Make the Cobot a new member on your welding team

It has become increasingly difficult for mid-sized companies to find qualified welders. Challenges such as a shortage of skilled labour and surging labour costs call for new approaches to solve the problem. Only if companies utilise their qualified staff efficiently and optimise their work flows – naturally, without compromising on quality – they will stay competitive.

Does that sound familiar to you? Then we would like to introduce to you the technology that may ensure your

competitiveness for the future. Cobot welding offers an easy entry point into the world of automated welding and a first step towards Industry 4.0. This robot technology enables medium-sized companies to weld small to medium batch sizes with ease and an affordable budget. The Lorch Cobot Welding Package is tailored perfectly to the needs of specialised welding companies, can be integrated seamlessly into their work flows and bolsters their competitiveness. Look forward to a new type of welding.

Services

You can obtain the Lorch Cobot Welding Package from your local Cobot partner. Because one thing is paramount to us: up-close and personal service from the beginning and no extensive waiting times. This is why all of Lorch's Cobot partners have undergone special training programs so that they can provide you with the best Cobot welding support right from the start. No matter what type of service you require – be it consulting, training, technical service or an attractive financing offer – you are in the best of hands with our Cobot partners.

Welding

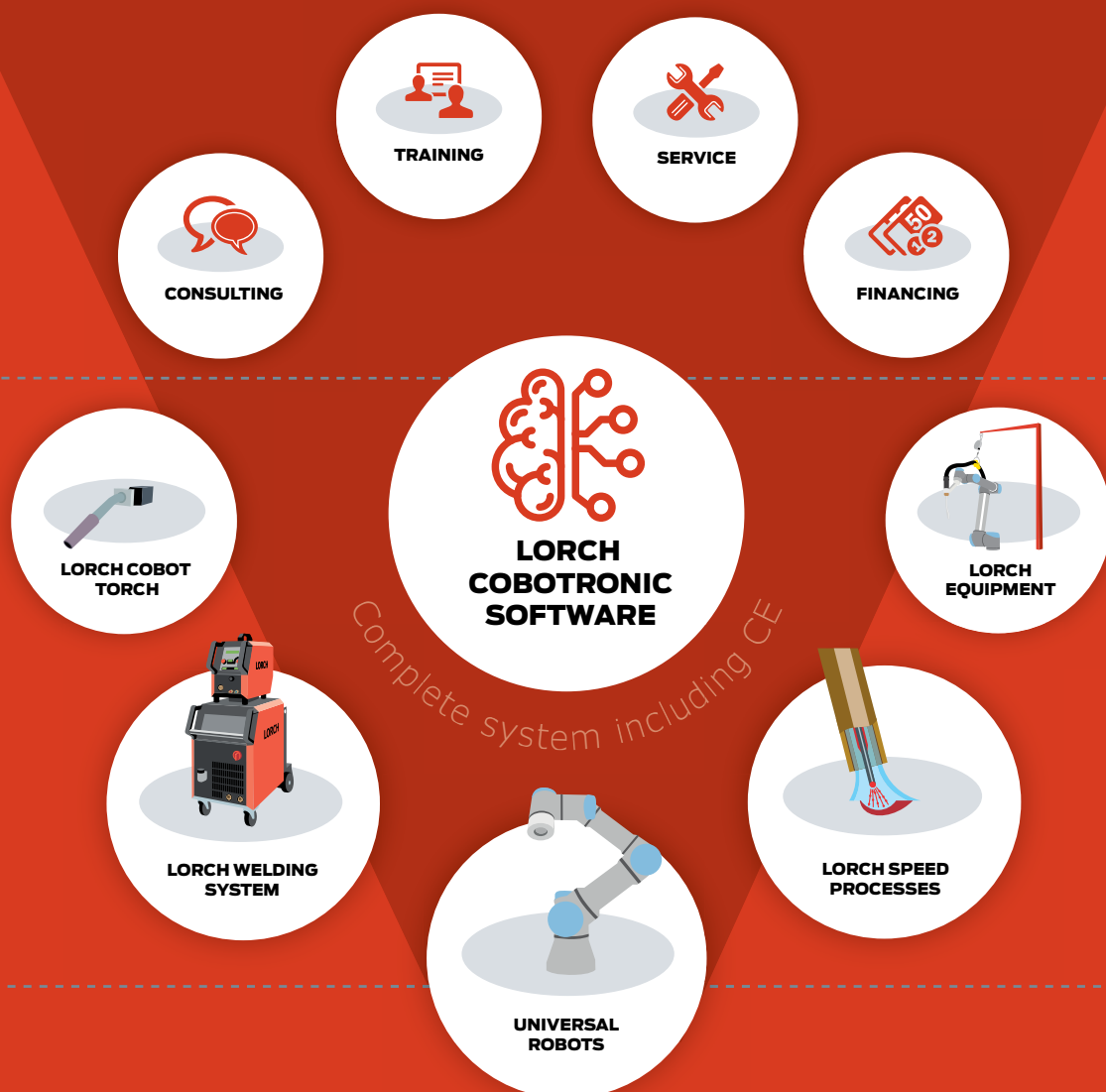
Our Cobot Welding Package is the product of more than 60 years of concentrated expertise in welding technology, innovative Lorch Speed welding processes and a great many years of experience in engineering welding solutions for automation and robotics. The pairing of a premium Lorch welding system with the specially developed Cobotronic software offers maximum synergy benefits and guarantees top quality and productivity during welding. The package is made complete by matching accessories that are customised to your needs.

Cobot

Cobots open a new chapter in the history of welding production and convince with their intuitive operation. Boasting more than a decade of experience in collaborative lightweight robot systems, the current market leader in Cobots brings you the UR10, a system that provides everything that is essential to a medium-sized welding company.



MAKES YOUR TEAM STRONGER



Services

+

Welding

+

Cobot

LORCH COBOT WELDING PACKAGE

THE LORCH COBOT WELDING PACKAGE



Cobot UR10

- Action radius: 1,300 mm
- Bearing load: 10 kg

S-RoboMIG XT

- Welding current 25–400 A
- Current at 60 % duty cycle 350 A
- Full process equipment
- Water cooling system with enhanced cooling performance

Cobot torch LMR 450 W

- Current at 100 % duty cycle 450 A
- Cobot-optimised torch holder

Cobotronic software

- Assistant Mode with integrated welding parameter database
- All welding parameters integrated in the Cobot control

	Package A	Package B	Package C	Package D
UR10 including control and touch control panel	•	•	•	•
Lorch S-RoboMIG XT RoboMIG XT with wire feeder and 3-year industrial warranty	Workshop wire feeder	Workshop wire feeder	Double wire feeder	Workshop wire feeder
Hose package 70 mm ²	1 m	10 m	1 m	1 m
Lorch LMR 450 W Cobot torch, 3.5 m including original equipment kit	•	•	•	–
TBI PushPull Cobot torch 3.5 m including original equipment kit	–	–	–	•
Boom, equipment for hose package handling, foot switch, function button with emergency stop, mounting plate, ground cable 70 mm ² , basket spool adapter	•	•	•	•
CE mark (Intended use: Cobot for welding on a welding bench)	•	•	•	•

820.00731 | 08.2019 | Technical changes and printing errors reserved.

Lorch Schweißtechnik GmbH
 Im Anwänder 24–26 · 71549 Auenwald · Germany
 T +49 7191 503-0 · F +49 7191 503-199
 info@lorch.eu · www.lorch-cobot-welding.com

LORCH
 smart welding